

# On-Staff Reading Exercises

**PG-20s**

**Adapted From Aloys Schmitt  
Prep Exercises**

A musical staff exercise consisting of five systems. Each system has a treble clef on the top staff and a bass clef on the bottom staff. The notes are color-coded by octave group: yellow (top), green (middle), cyan (lower), and purple (bottom). The notes are arranged in a sequence that moves up and then down across the systems. Below the staff, the notes are labeled with letters: ACE, A B C D E D C B, A C E C, A C E C, A.

**ABOUT THE NOTE COLORS.** *The colored notes show which octave group each note is to be played in.*

**From the Music  
Innovator's Workshop**

## **From the Author's Instructions:**

*These exercises are for the purpose of acquiring the greatest possible independence and evenness of the fingers.*

*Repeat each exercise at least 10 or 20 times, but omit the closing note until the final repetition. At first, practice each hand separately, then both together, always keeping the hands steady and quiet.*

*Practice each exercise slowly at first; increase the tempo gradually as the fingers acquire the necessary strength and flexibility.*

*It is advisable to practice these exercises in the keys and without changing the fingering.*

## **Aloys Schmitt**

1788-1866

**Exercise 1-1**

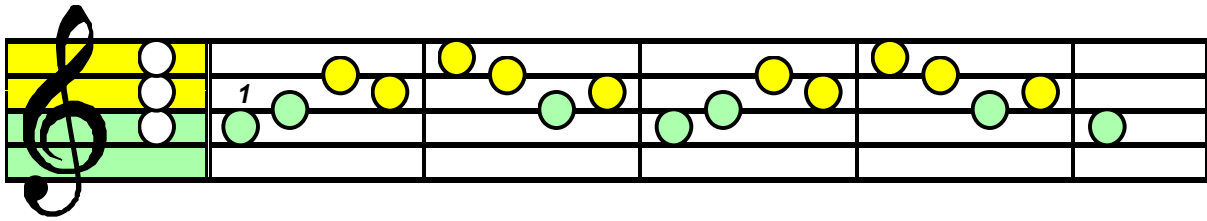
**Exercise 2-1 RH**

**Exercise 3-1 LH**

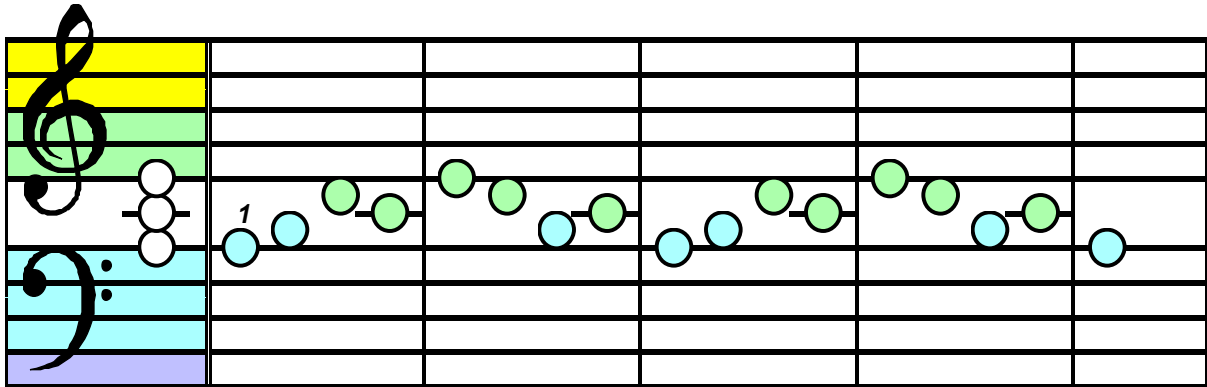
**Exercise 4-1**

ACE    A B C D    E D C B    A C E C    A C E C    A

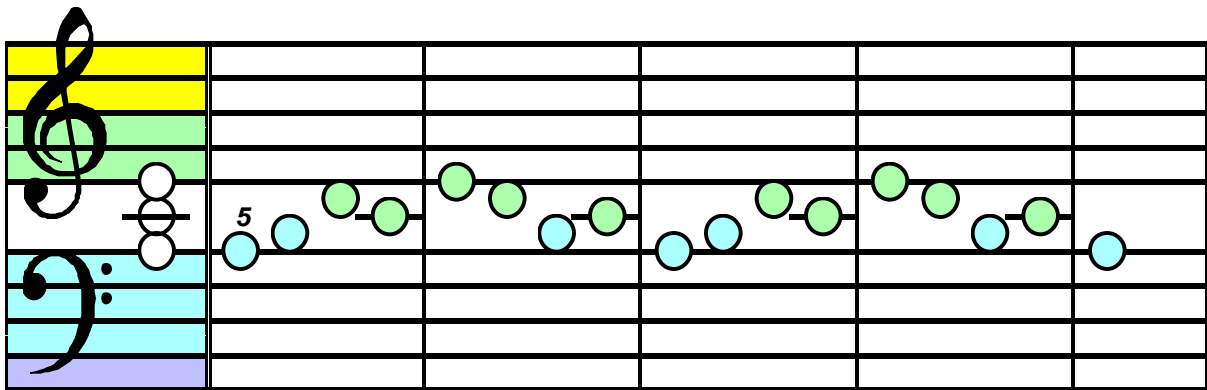
**Exercise 5-3**



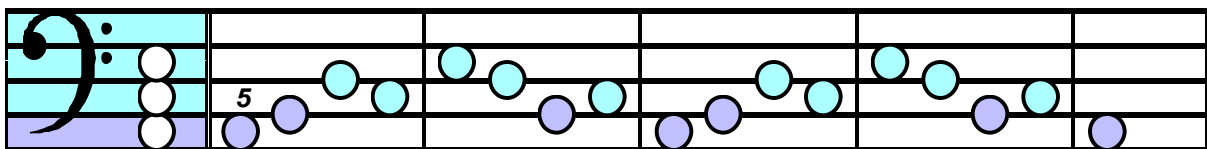
**Exercise 6-3 RH**



**Exercise 7-3 LH**



**Exercise 8-3**



ACE A B D C E D B C A B D C E D B C A

Exercise 9-5

Exercise 9-5 is a single-staff exercise in treble clef. The staff is highlighted in yellow and green. It consists of five measures of music. The notes are: Measure 1: G4 (green), A4 (yellow), B4 (yellow), C5 (yellow); Measure 2: B4 (yellow), A4 (yellow), G4 (green), F4 (green); Measure 3: E4 (green), D4 (green), C4 (green), B3 (green); Measure 4: A3 (green), G3 (green), F3 (green), E3 (green); Measure 5: D3 (green), C3 (green), B2 (green), A2 (green). A '1' is written below the first measure.

Exercise 10-5 RH

Exercise 10-5 RH is a two-staff exercise. The top staff is treble clef (yellow and green highlighted) and the bottom staff is bass clef (cyan and purple highlighted). It consists of five measures of music. The notes are: Measure 1: G4 (green), A4 (green), B4 (cyan), C5 (cyan); Measure 2: B4 (cyan), A4 (green), G4 (green), F4 (green); Measure 3: E4 (green), D4 (green), C4 (green), B3 (cyan); Measure 4: A3 (cyan), G3 (green), F3 (green), E3 (green); Measure 5: D3 (cyan), C3 (green), B2 (cyan), A2 (cyan). A '1' is written below the first measure.

Exercise 11-5 LH

Exercise 11-5 LH is a two-staff exercise. The top staff is treble clef (yellow and green highlighted) and the bottom staff is bass clef (cyan and purple highlighted). It consists of five measures of music. The notes are: Measure 1: G4 (green), A4 (green), B4 (cyan), C5 (cyan); Measure 2: B4 (cyan), A4 (green), G4 (green), F4 (green); Measure 3: E4 (green), D4 (green), C4 (green), B3 (cyan); Measure 4: A3 (cyan), G3 (green), F3 (green), E3 (green); Measure 5: D3 (cyan), C3 (green), B2 (cyan), A2 (cyan). A '5' is written below the first measure.

Exercise 12-5

Exercise 12-5 is a single-staff exercise in bass clef. The staff is highlighted in cyan and purple. It consists of five measures of music. The notes are: Measure 1: G2 (purple), F2 (purple), E2 (cyan), D2 (cyan); Measure 2: C2 (cyan), B1 (purple), A1 (purple), G1 (purple); Measure 3: F1 (purple), E1 (cyan), D1 (cyan), C1 (cyan); Measure 4: B0 (purple), A0 (purple), G0 (purple), F0 (purple); Measure 5: E0 (cyan), D0 (cyan), C0 (cyan), B0 (purple). A '5' is written below the first measure.

ACE A C B D C E D B A C B D C E D B A

**Exercise 13-7**

**Exercise 14-7 RH**

**Exercise 15-7 LH**

**Exercise 16-7**

ACE A D B E C B D C A D B E C B D C A

**Exercise 17-9**

**Exercise 18-9 RH**

**Exercise 19-9 LH**

**Exercise 20-9**

ACE A E D E C D B C A E D E C D B C A

**Exercise 21-1**

**Exercise 22-1**

**Exercise 23-1**

ACEA C D E F G F E D C E G E C E G E C

**Exercise 24-2**

ACE C B A G F G A B C A F A C A F A C



**Exercise 25-11**

**Exercise 26-11**

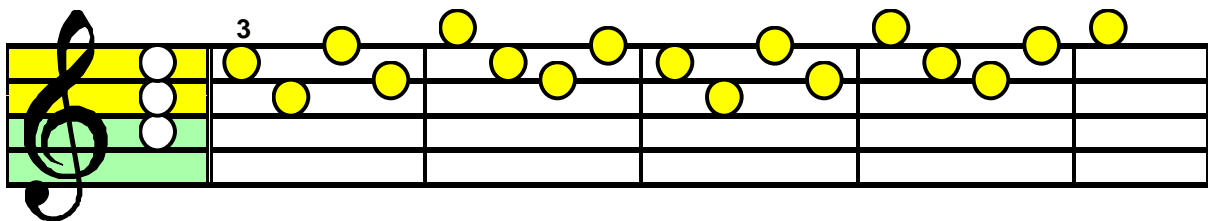
**Exercise 27-11**

ACEA C G E D E G F D C G E D E G F D C

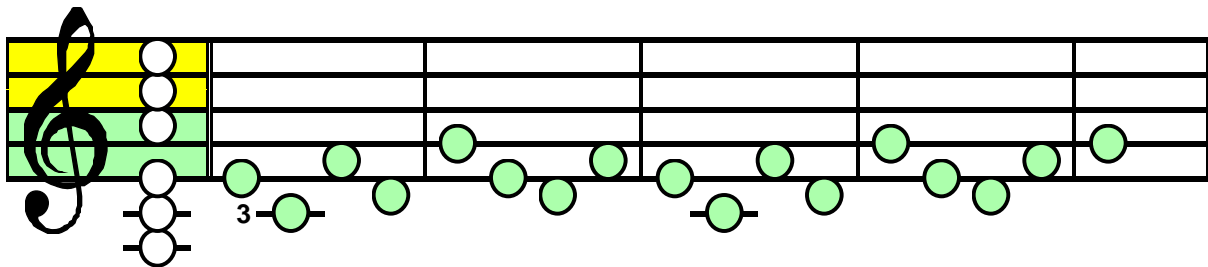
**Exercise 28-11**

ACE F C A G A C B G F C A G A C B G F

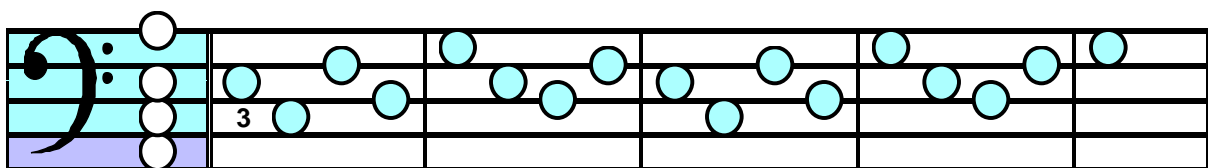
**Exercise 29-13**



**Exercise 30-13**

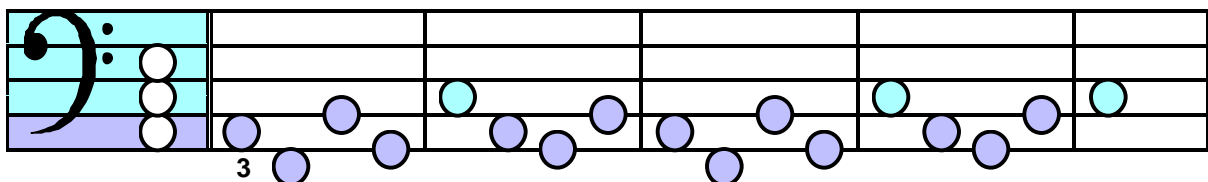


**Exercise 31-13**



ACEA E C F D G E D F E C F D G E D F G

**Exercise 32-13**



ACE A F B G C A G B A F B G C A G B C

**Exercise 33-15**

A musical staff in treble clef with a yellow shaded area above the staff and a green shaded area below. Yellow circles represent notes on the staff. A '1' is written below the first note.

**Exercise 34-15**

A musical staff in treble clef with a yellow shaded area above the staff and a green shaded area below. Green circles represent notes on the staff. A '1' is written below the first note.

**Exercise 35-15**

A musical staff in bass clef with a cyan shaded area above the staff and a purple shaded area below. Cyan circles represent notes on the staff. A '5' is written below the first note.

ACEA C E F D G E D F C E F D G E D F G

**Exercise 36-15**

A musical staff in bass clef with a cyan shaded area above the staff and a purple shaded area below. Purple circles represent notes on the staff. A '5' is written below the first note.

ACE F A B G C A G B F A B G C A G B C

**Exercise 37-21**

**Exercise 38-21**

**Exercise 39-21**

ACEA C E D E C D E F G E F E G F E D C

**Exercise 40-21**

ACE F A G A F G A B C A B A C B A G F

**Exercise 41-26**

**Exercise 42-26**

**Exercise 43-26**

ACEA C D C E D E D F E F E G D E D F C

**Exercise 44-26**

ACE F G F A G A G B A B A C G A G B F

***Page is blank.***