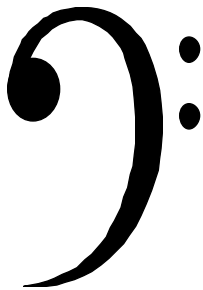


Favorite Folk and Children's Songs

PG-16



**Grand Staff Prep
on a Timeline**



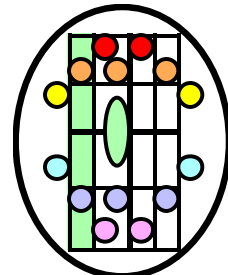
Note Colors

Sharps - #

Naturals

Flats - b

**From the Music
Innovator's Workshop**



Contents

<i>Introduction</i>	3
<i>America</i>	4
<i>At Pierrot's Door</i>	6
<i>Bingo</i>	8
<i>Down by the Station</i>	10
<i>Home on the Range</i>	12
<i>If You're Happy and You Know It</i>	14
<i>Michael Row the Boat Ashore</i>	16
<i>Ode to Joy</i>	18
<i>Oh, My Darling Clementine</i>	20
<i>Oh, Susanna</i>	22
<i>Twinkle, Twinkle, Little Star</i>	24
<i>Yankee Doodle</i>	26
<i>Twinkle, Twinkle, Little Star - in E</i>	28

A Note for Your Teacher

This unit is notated with our Grand Staff Prep (PG) version of traditional notation. Pitch is notated with the traditional bass and treble clefs. Rhythm is notated on a timeline. As shown on the cover, all notes are color coded to identify the notes as naturals, sharps, and flats.

This version is for those who are learning to read and play from traditional notation but are not yet skilled enough at reading the note names and key signatures to be able to play music at the intended tempos. This version enables students to play lots of wonderful music while still learning to read music skillfully.

With this version, students actually don't need to know the name of a single note to be able to play the music. BUT do have to develop some skill at identifying the names and addresses of the 12 keys of an octave group on the KEYBOARD: (ABCDEFGG and 12345).

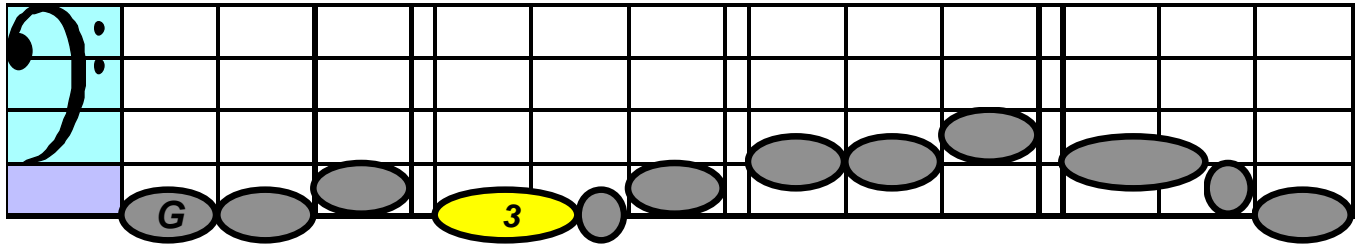
Here's the general plan used for labeling the notes of a melody in this unit. (This plan applies only to the notes of melodies, not to chord symbols.)

Melody notes (that form an interval from the previous note) are labeled with their (letter) names or (numeric addresses) EXCEPT for notes that are only a SMALL interval from the previous note. This results in some melodies having many labels and other melodies having very few labels. =====
Notes that are NOT labeled form intervals of: 1. a HOP (repeated key), 2. a STEP to the next key - white or black. 3. a SKIP over a white key (major and minor 3rds), 4. a JUMP to a more distant key when the jump is a repeat of the previous key just played.

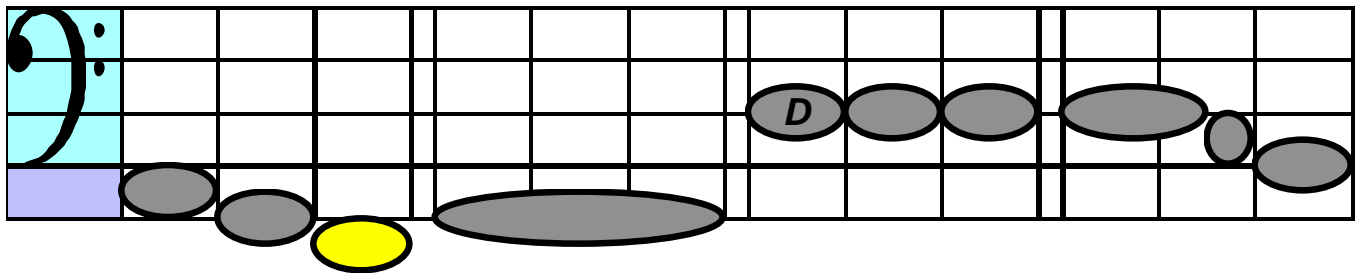
The intervals not labeled are those that can easily be recognized. The LABELED notes are the first note on a page and those forming the larger intervals, which are harder to read because of their larger size. They are best read from their names and addresses, which are the labeled notes in this version.

AMERICA

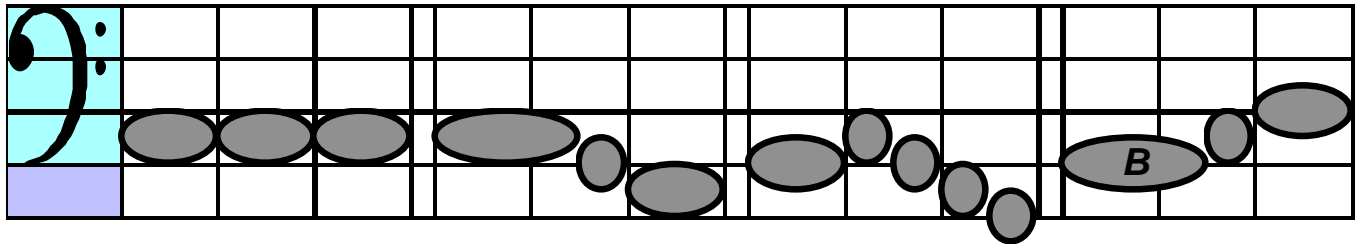
Moderately 3/4 #1



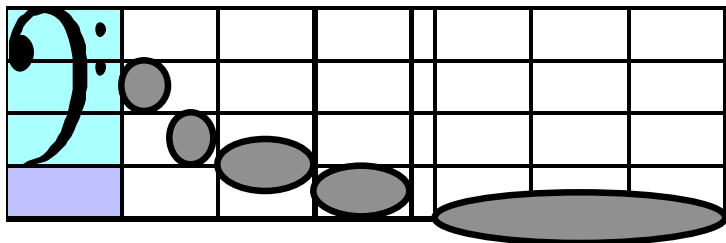
My coun-try 'tis of thee, Sweet land of lib-er-ty,



Of thee I sing; Land where my fa-thers died,



Land of the pil-grims' pride, From ev'-ry moun-tain-side,



Let free-dom ring.

AMERICA

Moderately 3/4 #:1

G A D7 G Em Am G B Em

My coun-try 'tis of thee, Sweet land of lib-er-ty,

Am G D7 G

Of thee I sing; Land where my fa-thers died,

D7 G D G C G Am G Am G

Land of the pil-grims' pride, From ev'-ry moun-tain-side,

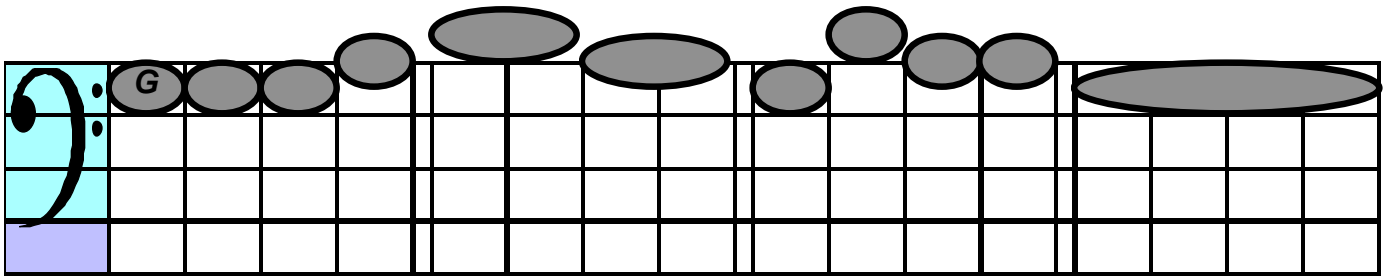
C G D7 G

Let free-dom ring.

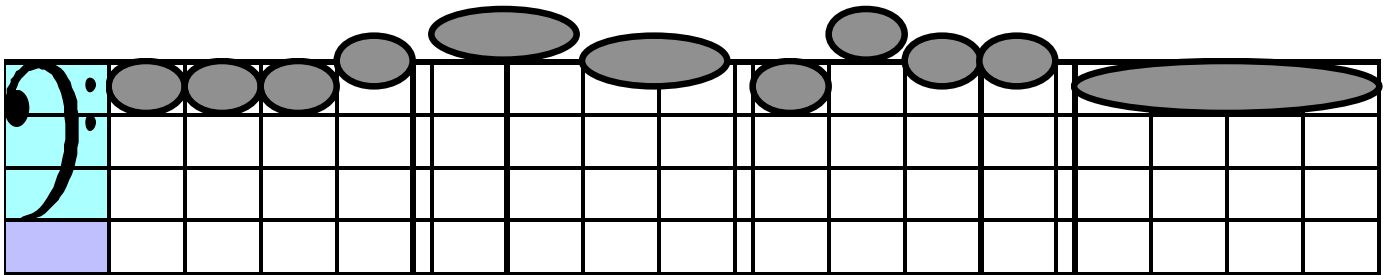
At Pierrot's Door

Moderately 4/4 #:1

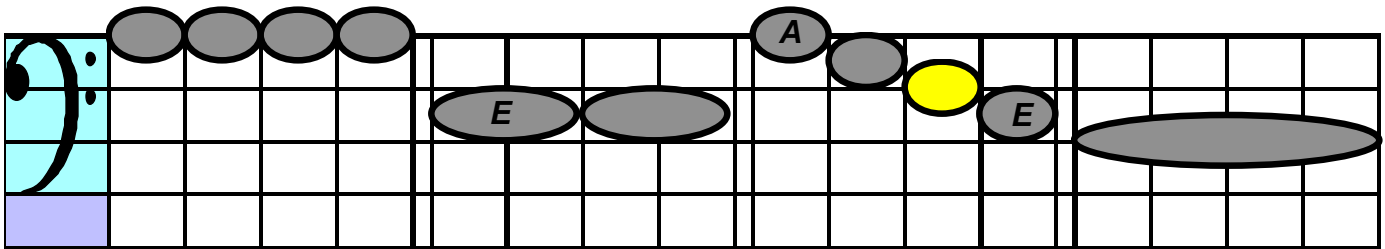
Old French Folk Song



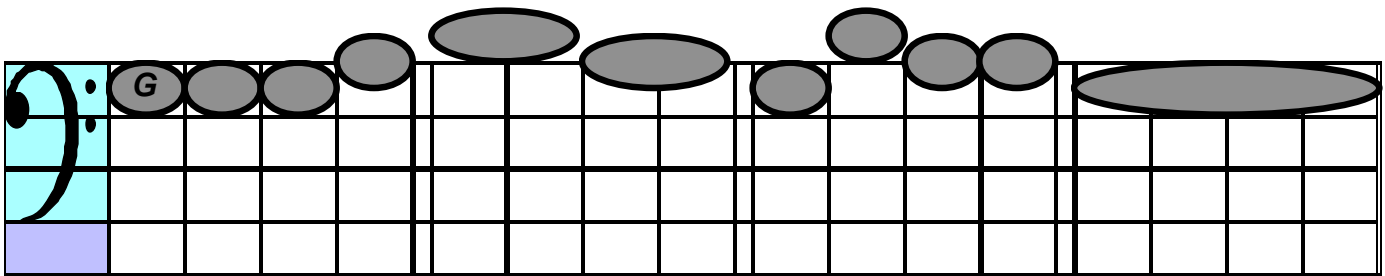
Good Pier-rot, I beg you, In the moon-light bright,



Your quill pen to lend me for I long to write.



Burned out is my can-dle, And my fire's out too;



Come, the door please o-pen, Let me in pray do!

At Pierrot's Door

Moderately 4/4 #:1

Old French Folk Song

G D G D G D7 G

Good Pier-rot, I beg you, In the moon-light bright,

G C Cm G D G D7 G

Your quill pen to lend me for I long to write.

A7 D A D7

Burned out is my can-dle, And my fire's out too;

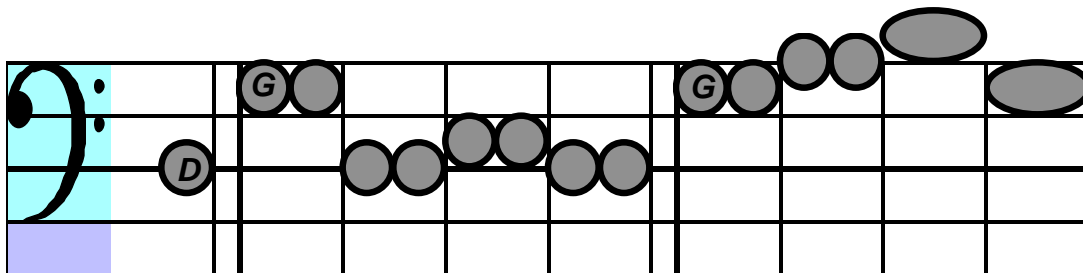
G D G D G D7 G

Come, the door please o-pen, Let me in pray do!

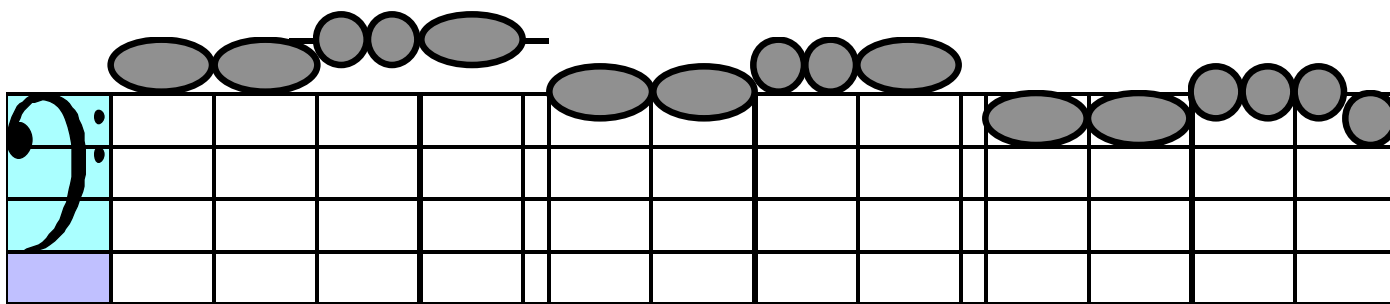
Bingo

Traditional Game Song

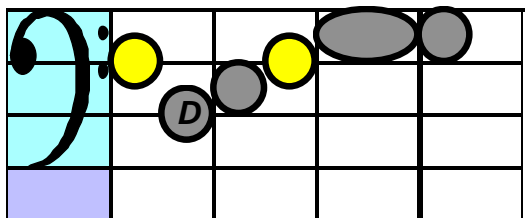
Brightly 4/4 #: 1



There was a far-mer had a dog and Bin-go was his name-o



B-I-N-G-O, B-I-N-G-O, B-I-N-G-O and



Bin-go was his name-o.

Bingo

Traditional Game Song

Brightly 4/4 #: 1

G C D G D G

There was a far-mer had a dog and Bin-go was his name-o

Em Am D G C Am

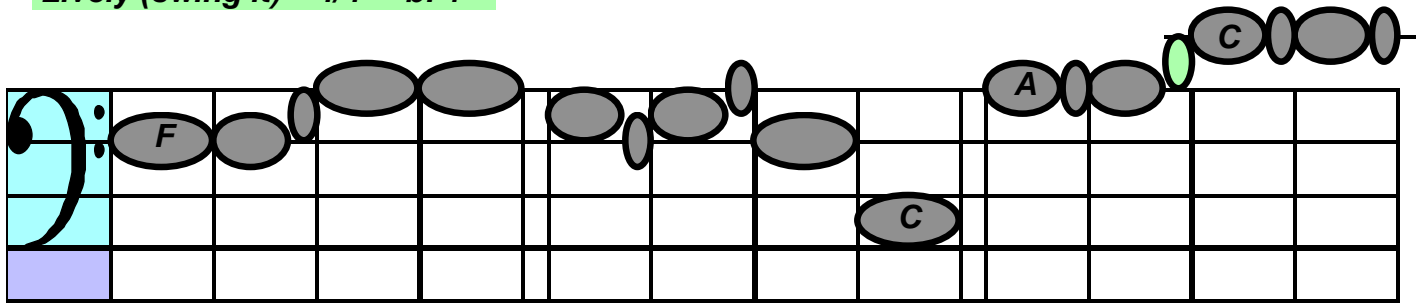
B-I-N-G-O, B-I-N-G-O, B-I-N-G-O and

D7 C G

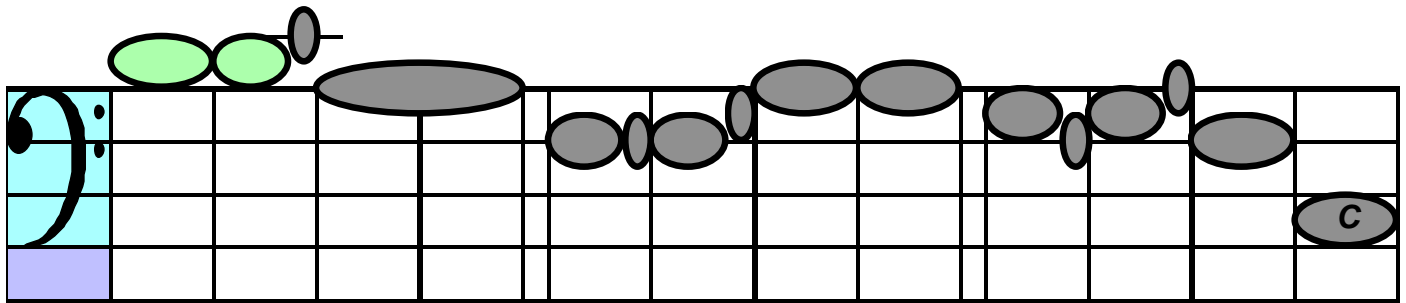
Bin-go was his name-o.

Down by the Station

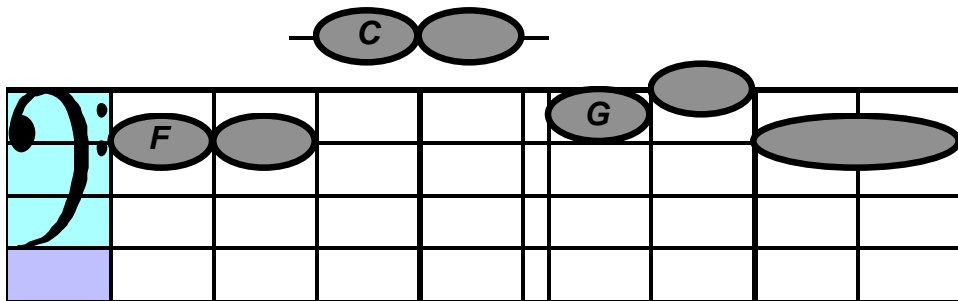
Lively (swing it) 4/4 b: 1



Down by the sta-tion early in the morn-ing, See the lit-tle puf-fer-bil-lies



all in a row. See the en-gine dri-ver pull the lit-tle han-dle.



Choo! Choo! Toot! Toot! Off they go.

Down by the Station

Lively (swing it) 4/4 b: 1

Musical notation for the first line of the song. It features a treble clef and a key signature of one flat (Bb). The melody is written on a five-line staff with a yellow highlight on the first staff line. The notes are: F4 (quarter), G4 (quarter), A4 (quarter), Bb4 (quarter), C5 (quarter), Bb4 (quarter), A4 (quarter), G4 (quarter), F4 (quarter). Chords are indicated above the staff: F (under the first measure), C7 (under the second measure), and F (under the third measure). A circled 'C' is placed below the staff at the end of the line.

Down by the sta-tion early in the morn-ing, See the lit-tle puf-fer-bil-lies

Musical notation for the second line of the song. It features a treble clef and a key signature of one flat (Bb). The melody is written on a five-line staff with a yellow highlight on the first staff line. The notes are: G4 (quarter), A4 (quarter), Bb4 (quarter), C5 (quarter), Bb4 (quarter), A4 (quarter), G4 (quarter), F4 (quarter), E4 (quarter), D4 (quarter), C4 (quarter). Chords are indicated above the staff: C7 (under the first measure), F (under the second measure), C7 (under the third measure), and F (under the fourth measure). A circled 'C' is placed below the staff at the end of the line.

all in a row. See the en-gine dri-ver pull the lit-tle han-dle.

Musical notation for the third line of the song. It features a treble clef and a key signature of one flat (Bb). The melody is written on a five-line staff with a yellow highlight on the first staff line. The notes are: F4 (quarter), G4 (quarter), A4 (quarter), Bb4 (quarter), C5 (quarter), Bb4 (quarter), A4 (quarter), G4 (quarter), F4 (quarter). Chords are indicated above the staff: C7 (under the second measure) and F (under the third measure). A circled 'G' is placed below the staff under the second measure.

Choo! Choo! Toot! Toot! Off they go.

Home on the Range - chorus

Moderately 3/4 #: 1

Kelley

Home, home on the range, Where the

deer and the An-te-lope play, Where

sel-dom is heard a dis-cour-ag-ing word, and the

skies are not cloud-y all day.

Home on the Range - chorus

Moderately 3/4 #: 1

Kelley

Home, home on the range, Where the

deer and the An-te-lope play, Where

sel-dom is heard a dis-cour-ag-ing word, and the

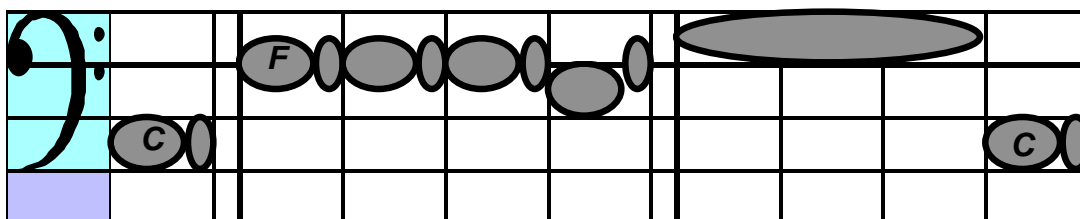
skies are not cloud-y all day.

If You're Happy and You Know It

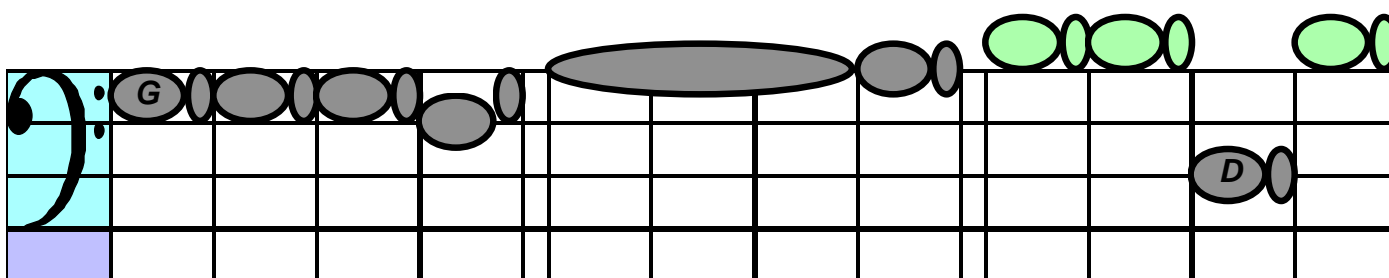
Traditional American Game Song

L. Smith

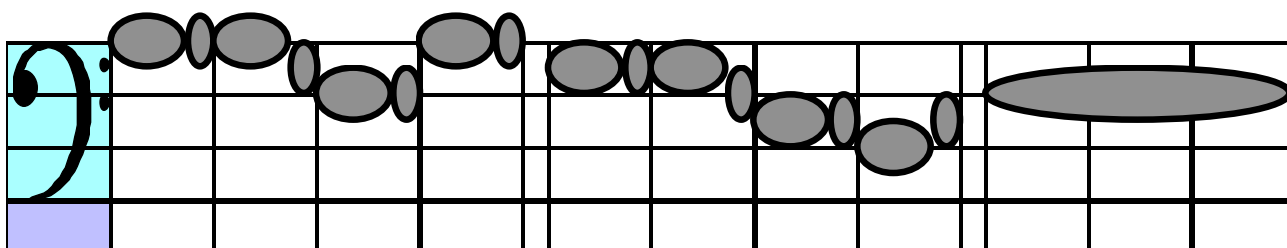
Lively (swing it) 4/4 b: 1



If you're hap-py and you know it, clap your hands. If you're



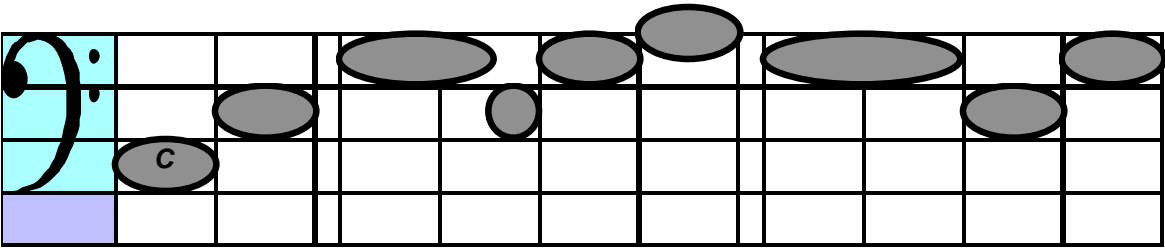
hap-py and you know it , clap your hands. If you're hap-py and you know it, then you're



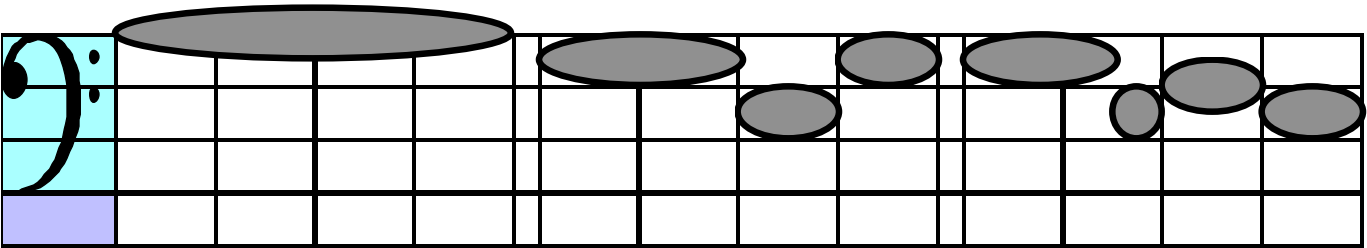
face will sure-ly show it, If you're hap-py and you know it, clap your hands.

Michael Row the Boat Ashore

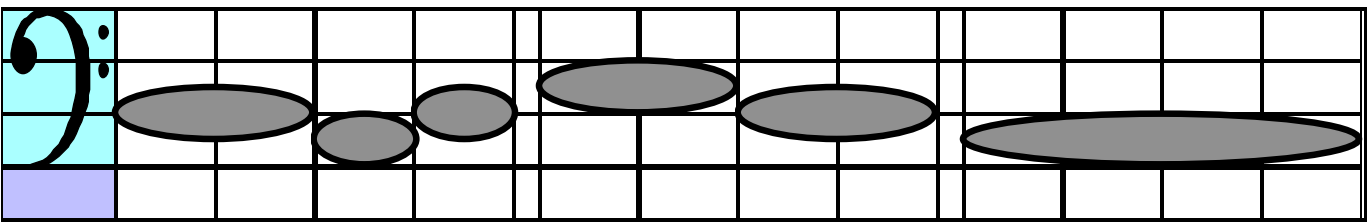
Moderately 4/4 #/b: 0



Mi-chael, row the boat a-shore, a-le-



lu-ya, Mi-chael, row the boat a-



shore, a-le-lu-uu-ya.

Michael Row the Boat Ashore

Moderately 4/4 #/b: 0

C

G

C

Mi-chael, row the boat a-shore, a-le-

F

C

Em

lu-ya, Mi-chael, row the boat a-

Dm

C

G7

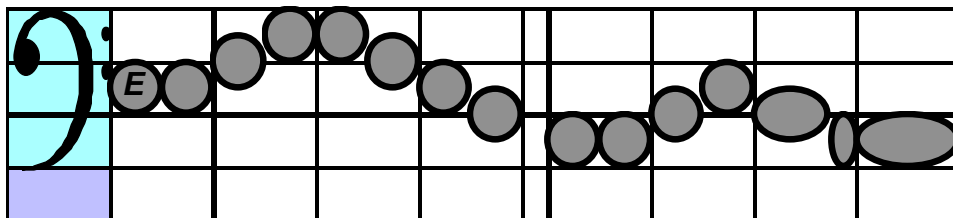
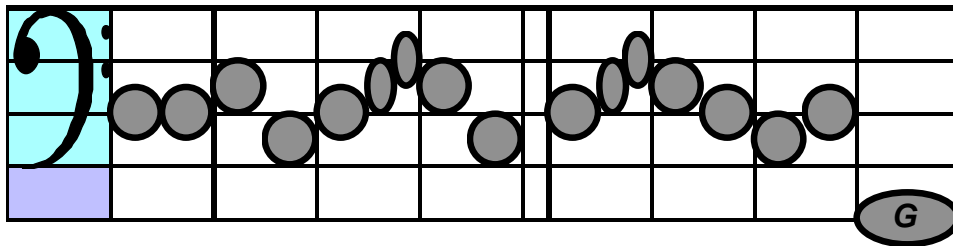
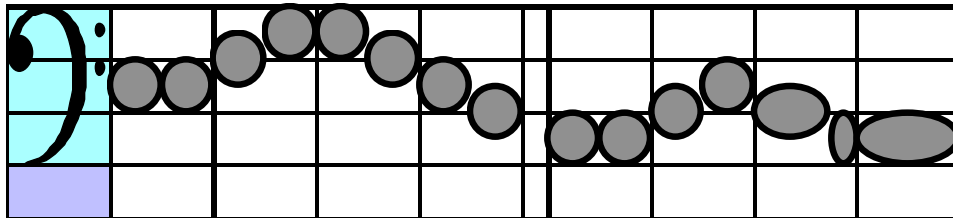
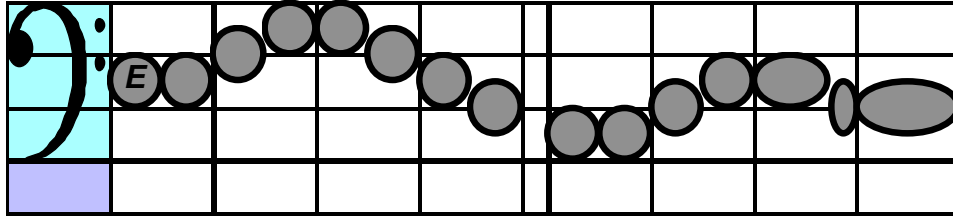
C

shore, a-le-lu-uu-ya.

Ode to Joy

Moderately 4/4 #/b: 0

Ludwig van Beethoven



Ode to Joy

Moderately 4/4 #/b: 0

Ludwig van Beethoven

C G C G

C F C G C

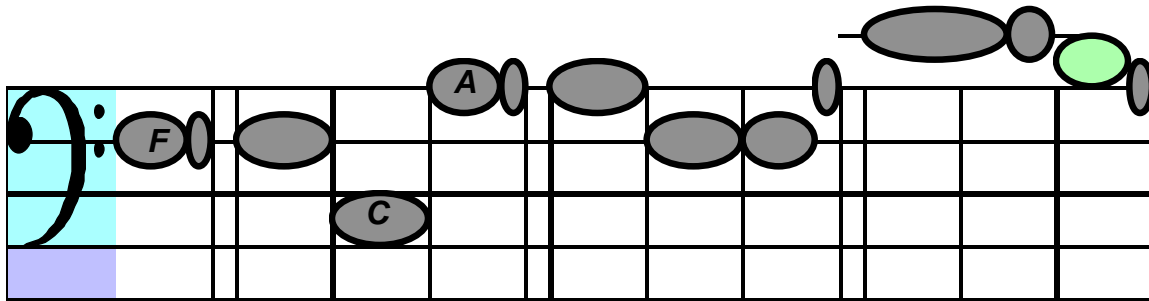
G C G C G E Am G

C F C G C

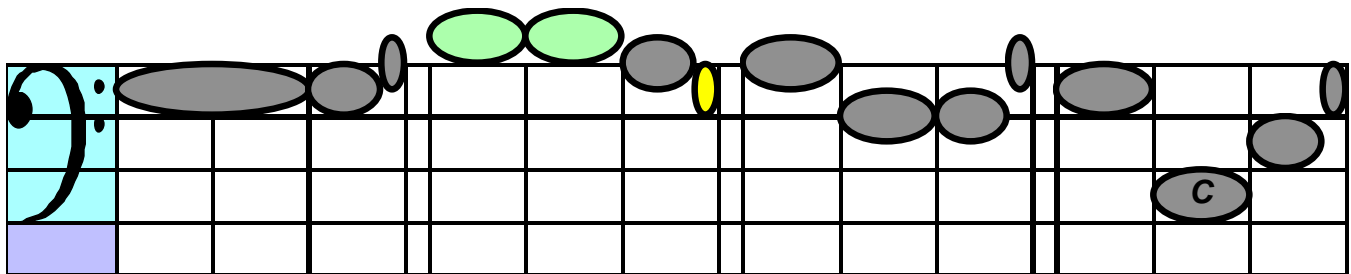
Oh, My Darling Clementine

American Mining Song
Montrose

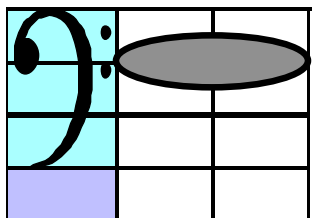
Lively (swing it) 3/4 b: 1



Chorus: Oh my dar-ling, oh my dar-ling, oh my dar-ling Clem-en-



tine. You are lost and gone for-ever, dread-ful sor-ry Clem-en-

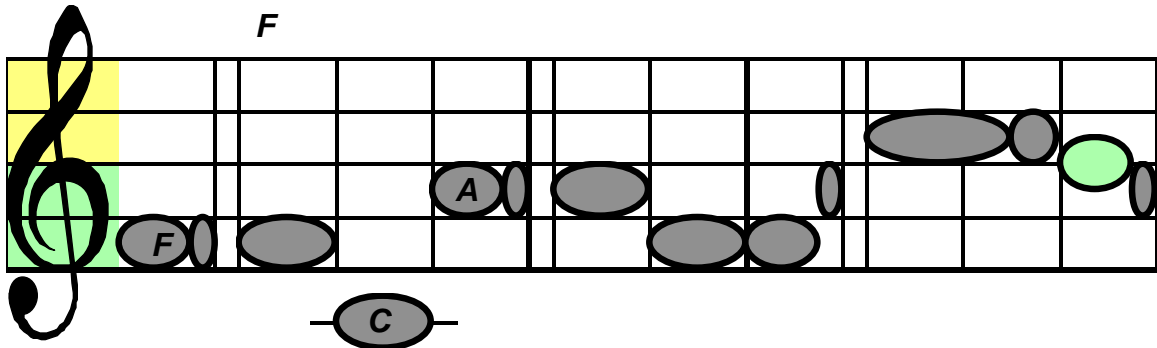


tine.

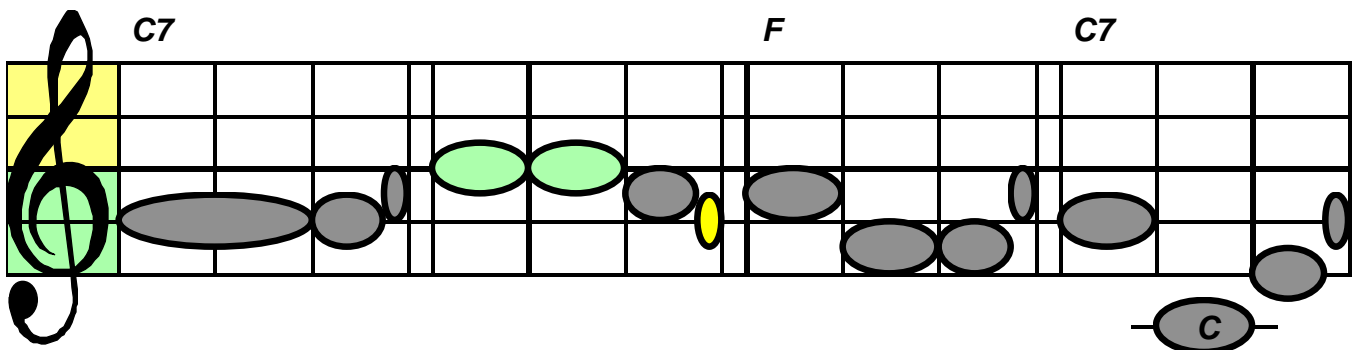
Oh, My Darling Clementine

Lively (swing it) 3/4 b: 1

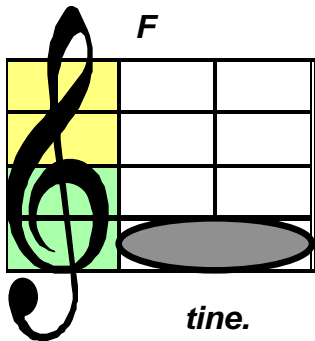
American Mining Song
Montrose



Chorus: Oh my dar-ling, oh my dar-ling, oh my dar-ling Clem-en-



tine. You are lost and gone for-ever, dread-ful sor-ry Clem-en-

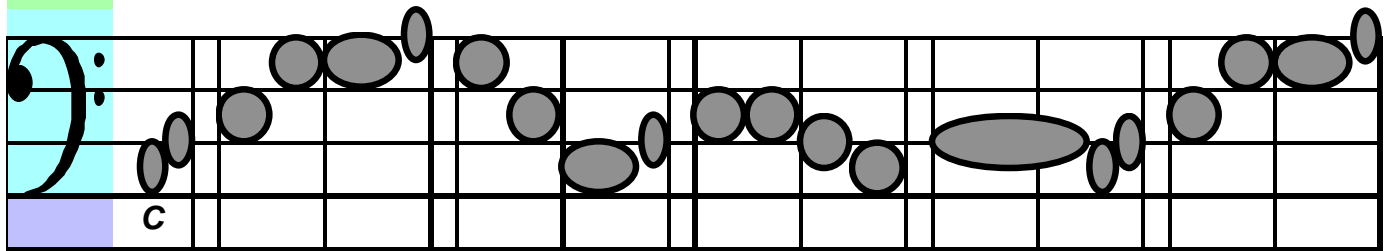


tine.

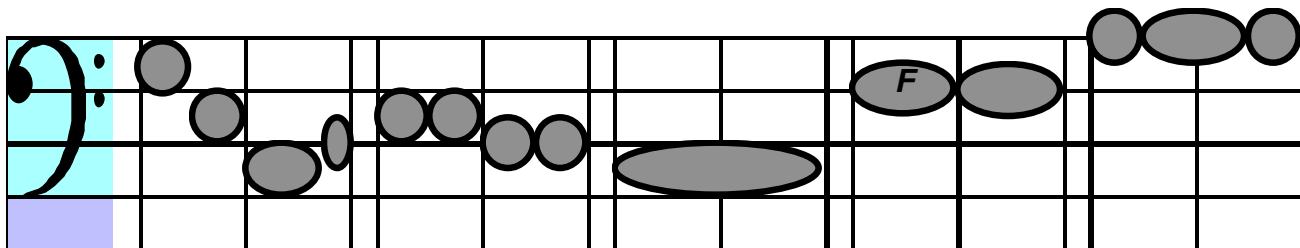
Oh, Susanna

Stephen C. Foster

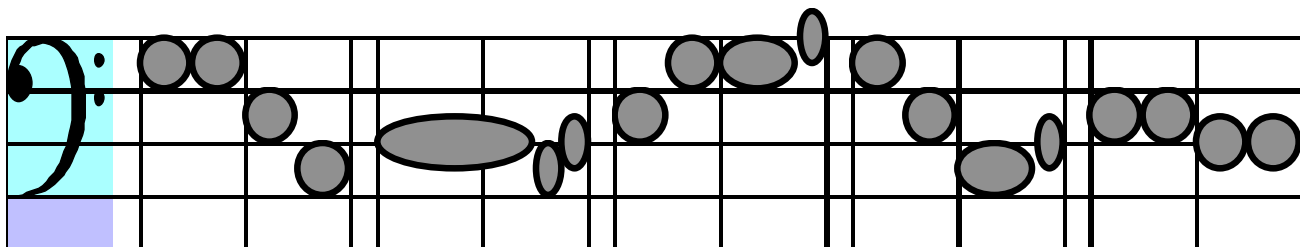
Lively 2/4 #/b: 0



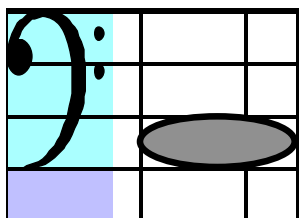
I -- come from Al-a-bam-a with a ban-jo on my knee, I'm -- goin' to Lou'-si-



an-a my Su-san-na for to see. Oh! Su-san-na, oh



don't you cry for me, for I come from Al-a-bam-a with a ban-jo on my



Knee.

Oh, Susanna

Stephen C. Foster

Lively 2/4 #/b: 0

A musical staff in treble clef with a 2/4 time signature and no sharps or flats. The key signature is C major. The staff is divided into four measures by vertical bar lines. Above the staff, the chords C, D7, G7, and C are written above their respective measures. The notes are: C4 (quarter), E4 (quarter), G4 (quarter), F4 (quarter), E4 (quarter), D4 (quarter), C4 (quarter), G4 (quarter), F4 (quarter), E4 (quarter), D4 (quarter), C4 (quarter), G4 (quarter), F4 (quarter), E4 (quarter), D4 (quarter), C4 (quarter). The first measure is highlighted with a yellow background.

I -- come from Al-a-bam-a with a ban-jo on my knee, I'm -- goin' to Lou'-si-

A musical staff in treble clef with a 2/4 time signature and no sharps or flats. The staff is divided into three measures by vertical bar lines. Above the staff, the chords D7, C, and F are written above their respective measures. The notes are: C4 (quarter), E4 (quarter), G4 (quarter), F4 (quarter), E4 (quarter), D4 (quarter), C4 (quarter), G4 (quarter), F4 (quarter), E4 (quarter), D4 (quarter), C4 (quarter), G4 (quarter), F4 (quarter), E4 (quarter), D4 (quarter), C4 (quarter). The first measure is highlighted with a yellow background.

an-a my Su-san-na for to see. Oh! Su-san-na, oh

A musical staff in treble clef with a 2/4 time signature and no sharps or flats. The staff is divided into four measures by vertical bar lines. Above the staff, the chords C, G7, C, and G7 are written above their respective measures. The notes are: C4 (quarter), E4 (quarter), G4 (quarter), F4 (quarter), E4 (quarter), D4 (quarter), C4 (quarter), G4 (quarter), F4 (quarter), E4 (quarter), D4 (quarter), C4 (quarter), G4 (quarter), F4 (quarter), E4 (quarter), D4 (quarter), C4 (quarter). The first measure is highlighted with a yellow background.

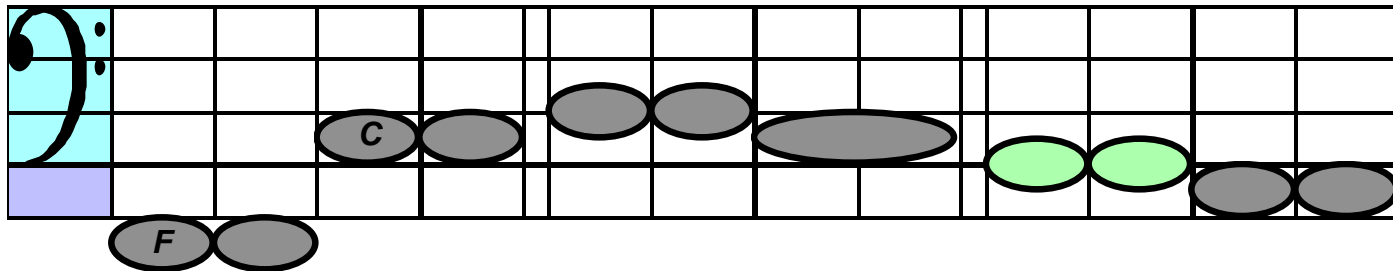
don't you cry for me, for I come from Al-a-bam-a with a ban-jo on my

A musical staff in treble clef with a 2/4 time signature and no sharps or flats. The staff is divided into three measures by vertical bar lines. Above the staff, the chord C is written above the first measure. The notes are: C4 (quarter), E4 (quarter), G4 (quarter), F4 (quarter), E4 (quarter), D4 (quarter), C4 (quarter). The first measure is highlighted with a yellow background.

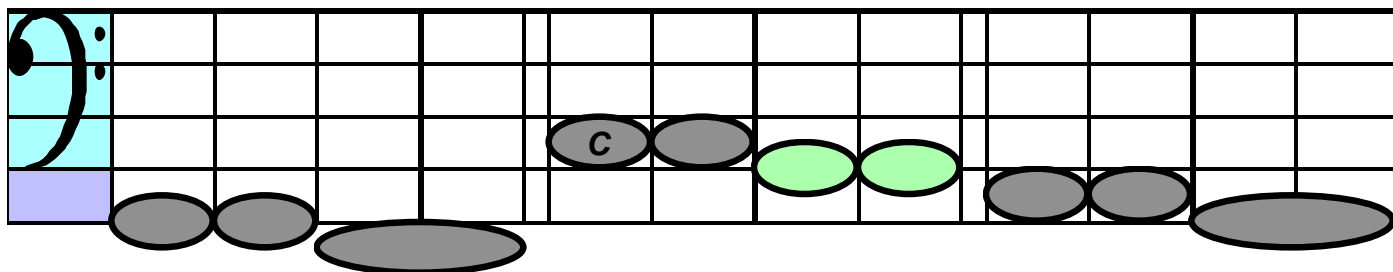
Knee.

Twinkle, Twinkle, Little Star

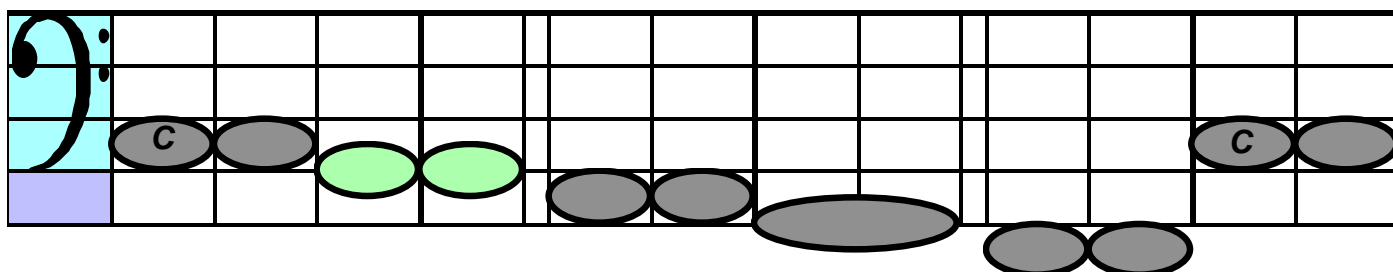
Moderately b: 1 4/4



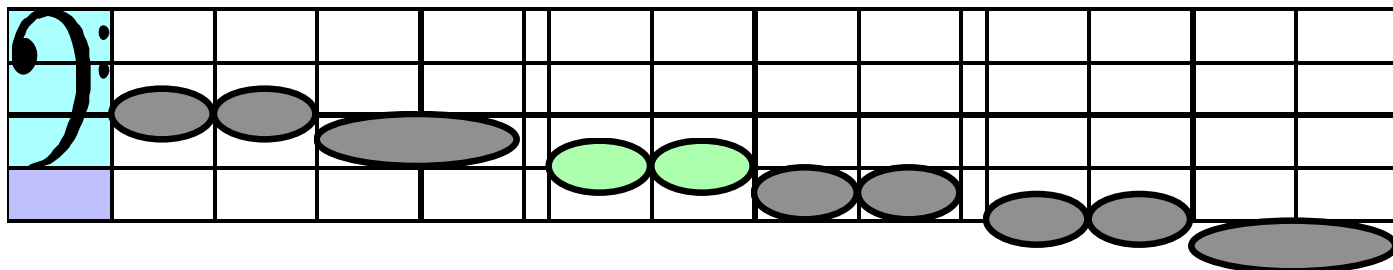
Twin-kle, twin-kle, lit-tle star, How I won-der



what you are; Up a-bove the world so high,



Like a dia-mond in the sky, Twin-kle, twin-kle,



lit-tle star, How I won-der what you are.

Twinkle, Twinkle, Little Star

Moderately *b: 1 4/4*

The first line of musical notation is on a treble clef staff. Above the staff, the chords F, Bb, F, C, and F are written above measures 1 through 5. The notes are: F (first line, first space), C (second line, first space), Bb (second line, second space), F (second line, second space), C (second line, second space), and F (first line, first space). The notes are grouped by chords: F (measures 1-2), Bb (measures 3-4), F (measure 5), C (measures 6-7), and F (measures 8-9). The notes are shaded: F and C are green, Bb is grey, and F is grey.

Twin-kle, twin-kle, lit-tle star, How I won-der

The second line of musical notation is on a treble clef staff. Above the staff, the chords C, F, C, F, and C are written above measures 1 through 5. The notes are: C (first line, first space), F (second line, second space), C (first line, first space), F (second line, second space), and C (first line, first space). The notes are grouped by chords: C (measures 1-2), F (measures 3-4), C (measures 5-6), F (measures 7-8), and C (measures 9-10). The notes are shaded: C and F are green, and F is grey.

what you are; Up a-bove the world so high,

The third line of musical notation is on a treble clef staff. Above the staff, the chords F, C, F, C7, and F are written above measures 1 through 5. The notes are: F (first line, first space), C (second line, second space), F (first line, first space), C7 (second line, second space), and F (first line, first space). The notes are grouped by chords: F (measures 1-2), C (measures 3-4), F (measures 5-6), C7 (measures 7-8), and F (measures 9-10). The notes are shaded: F and C are green, and F is grey.

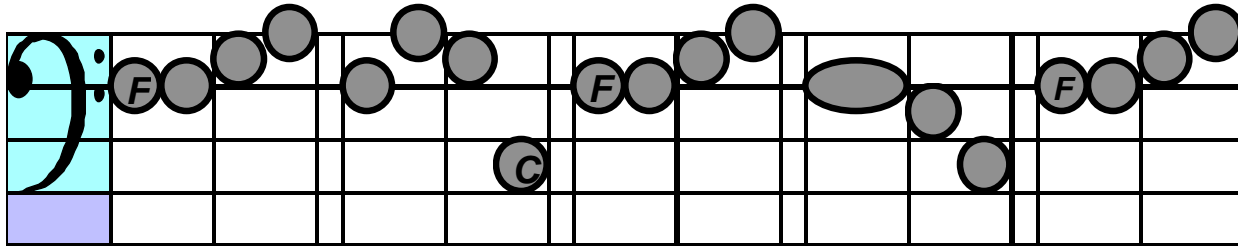
Like a dia-mond in the sky, Twin-kle, twin-kle,

The fourth line of musical notation is on a treble clef staff. Above the staff, the chords Bb, F, C, F, C, and F are written above measures 1 through 6. The notes are: Bb (second line, second space), F (second line, second space), C (first line, first space), F (second line, second space), C (first line, first space), and F (second line, second space). The notes are grouped by chords: Bb (measures 1-2), F (measures 3-4), C (measures 5-6), F (measures 7-8), C (measures 9-10), and F (measures 11-12). The notes are shaded: Bb and C are green, and F is grey.

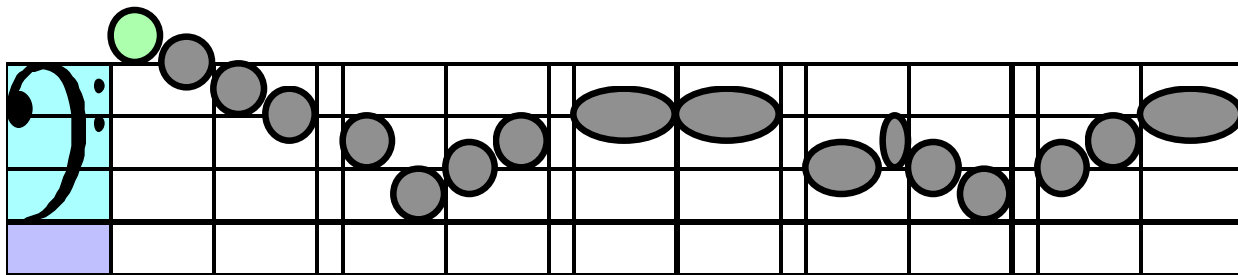
lit-tle star, How I won-der what you are.

Yankee Doodle

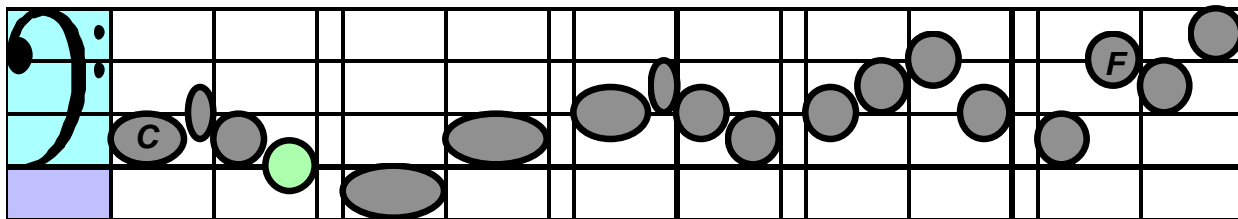
Lively 2/4 b: 1



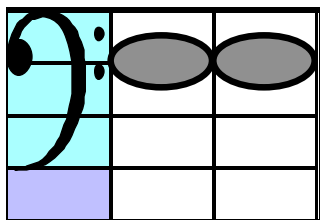
Dad and I went down to camp, A-long with Cap-tain Good-ing and there we saw the



men and boys as thick as hast-y pud-ding. Yan-kee Doo-dle keep it up,



Yan-kee Doo-dle dan-dy, Mind the mu-sic and the step, and with the girls be



han-dy.

Yankee Doodle

Lively 2/4 b: 1

A musical staff in treble clef with a key signature of one flat (Bb). The first measure is highlighted in yellow and green. The notes are: F4 (quarter), G4 (quarter), A4 (quarter), Bb4 (quarter), A4-G4 (beamed eighth notes), F4 (quarter), E4 (quarter), D4 (quarter), C4 (quarter). Chords above the staff are: F (above F4), C7 (above G4-A4), F (above Bb4), C7 (above A4-G4), F (above F4). Below the staff are two circles: one labeled 'C' on a line and one on a space.

Dad and I went down to camp, A-long with Cap-tain Good-ing and there we saw the

A musical staff in treble clef with a key signature of one flat (Bb). The first measure is highlighted in yellow and green. The notes are: Bb4 (quarter), A4 (quarter), G4 (quarter), F4 (quarter), E4 (quarter), D4 (quarter), C4 (quarter), Bb4 (quarter), A4-G4 (beamed eighth notes), F4 (quarter), E4 (quarter), D4 (quarter), C4 (quarter). Chords above the staff are: Bb (above Bb4), C7 (above A4-G4), F (above F4), Bb (above Bb4). Below the staff are two circles: one on a line and one on a space.

men and boys as thick as hast-y pud-ding. Yan-kee Doo-dle keep it up,

A musical staff in treble clef with a key signature of one flat (Bb). The first measure is highlighted in yellow and green. The notes are: Bb4 (quarter), A4 (quarter), G4 (quarter), F4 (quarter), E4 (quarter), D4 (quarter), C4 (quarter), Bb4 (quarter), A4-G4 (beamed eighth notes), F4 (quarter), E4 (quarter), D4 (quarter), C4 (quarter). Chords above the staff are: F (above F4), Bb (above Bb4), F (above F4), C7 (above A4-G4). Below the staff are two circles: one labeled 'C' on a line and one on a space.

Yan-kee Doo-dle dan-dy, Mind the mu-sic and the step, and with the girls be

A musical staff in treble clef with a key signature of one flat (Bb). The first measure is highlighted in yellow and green. The notes are: Bb4 (quarter), A4 (quarter), G4 (quarter), F4 (quarter), E4 (quarter), D4 (quarter), C4 (quarter), Bb4 (quarter). Chord above the staff is: F (above F4). Below the staff are two circles: one on a line and one on a space.

han-dy.

Twinkle, Twinkle, Little Star

Moderately #: 4 4/4

E A E B E

Twin-kle, twin-kle, lit-tle star, How I won-der

B E B E B

E B E B7 E

Like a dia-mond in the sky, Twin-kle, twin-kle,

A E B E B E

lit-tle star, How I won-der what you are.