

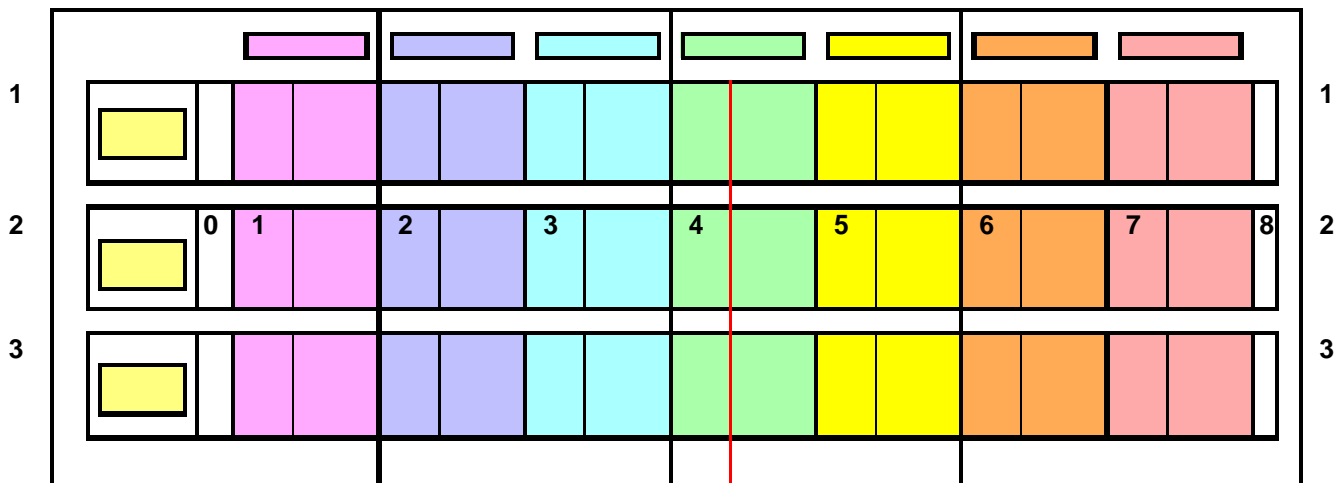
# Piano Keyboard Master Chart

**PG-03s**

**Focus on Patterns**



*The Seven Octave Groups -- Three Keyboards Shown*

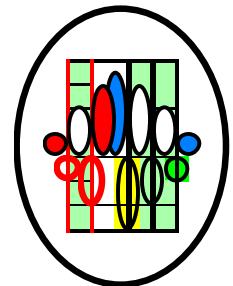


Crack between E and F >>

<< Exact centerline of the piano



**From the Music  
Innovator's Workshop**



*Page is Blank*

## ***About This Unit***

### ***Who is This Unit For?***

It is for anyone who would like to play the piano (or other keyboard). It is for the beginning piano student, and it can benefit anyone who already plays but has not yet become thoroughly familiar with the important patterns formed by the keys on the keyboard.

### ***What Can I Learn From the Chart?***

The keyboard consists of black and white keys arranged in a carefully defined pattern to make the keyboard easy to play and understand. The keys form multiple patterns that you don't see at first. The chart helps you see these patterns by describing them and by color coding them to make them stand out clearly.

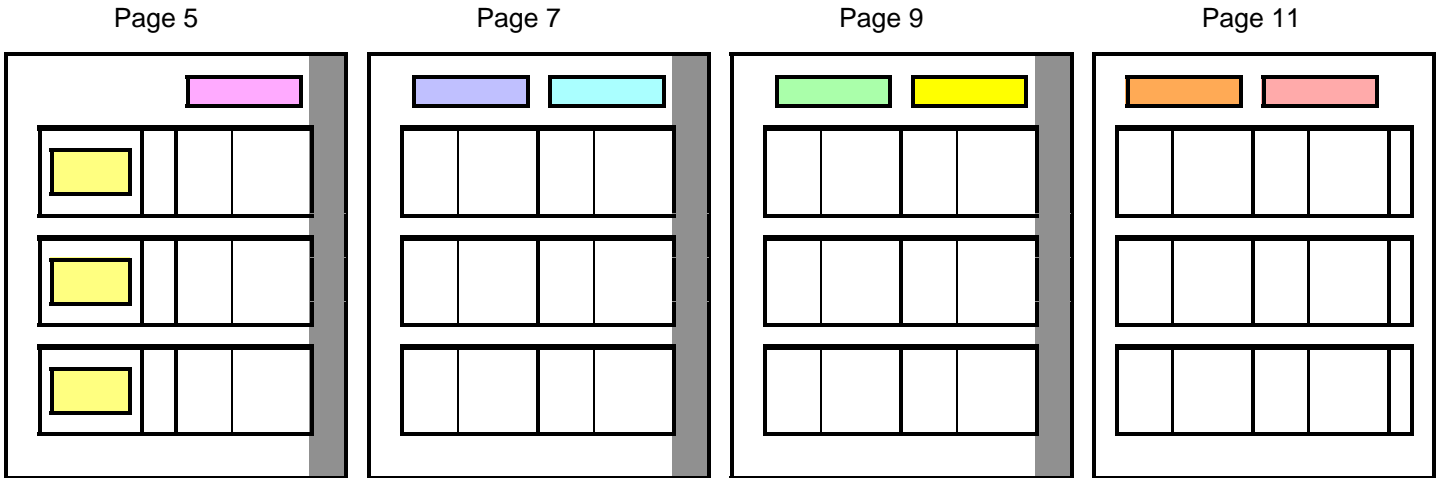
The chart shows all of the natural notes of traditional music notation superimposed over a diagram of the keyboard.

The chart also shows addresses for the black keys. These addresses greatly simplify learning to find individual keys on the keyboard.

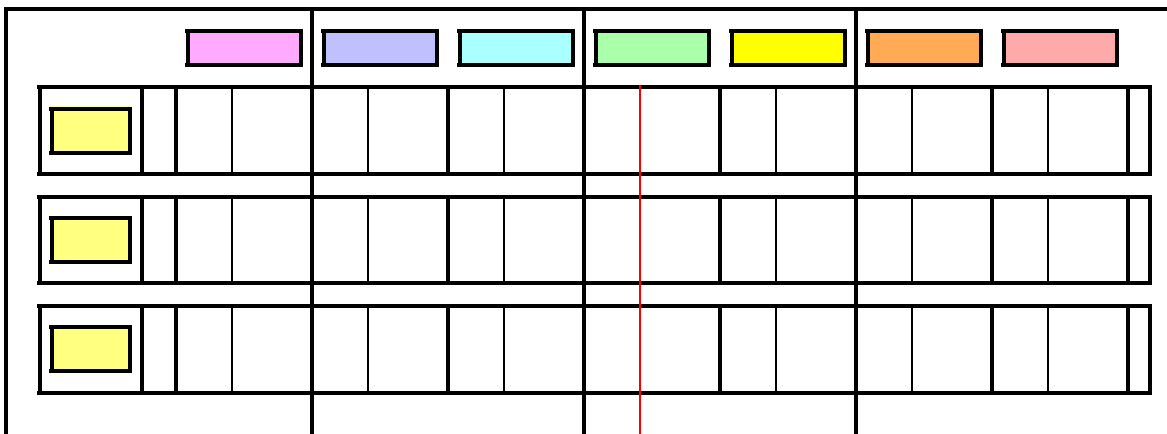
**Instructions for Assembling the Master Chart of the Keyboard**

Pages 5, 7, 9, and 11 make a single chart of the entire keyboard when they are placed in order right next to each other on your piano's music rack.

The assembled 4-page chart shows three diagrams of the entire keyboard, as you will see when you read across the assembled chart. Each of these three keyboard diagrams shows you something different about your keyboard.



You can simply overlap the pages over the gray edges, or you can assemble the pages into a single chart that shows three continuous keyboards, without gaps, as shown below. To make these pages into a single chart, you can trim off the left edges of pages 7, 9, and 11, and then paste the remaining left edges over the grey parts of the right edges of the pages with rubber cement or other suitable adhesive.



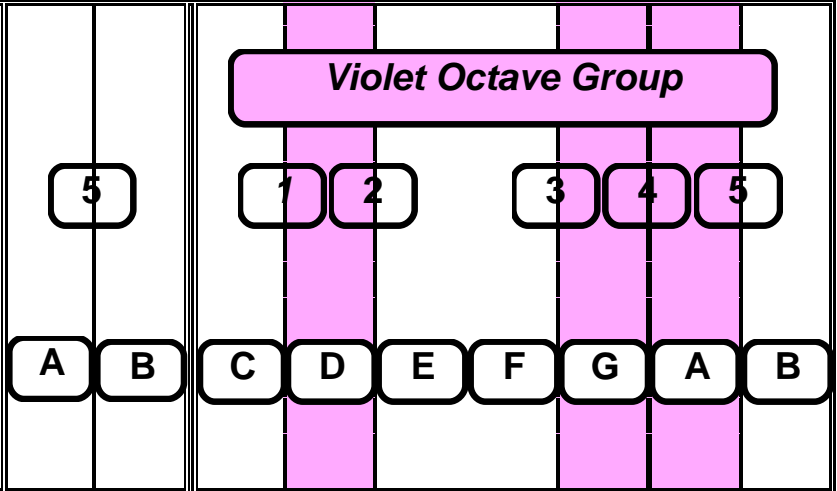
Crack between E and F >>

<< Exact centerline of the piano

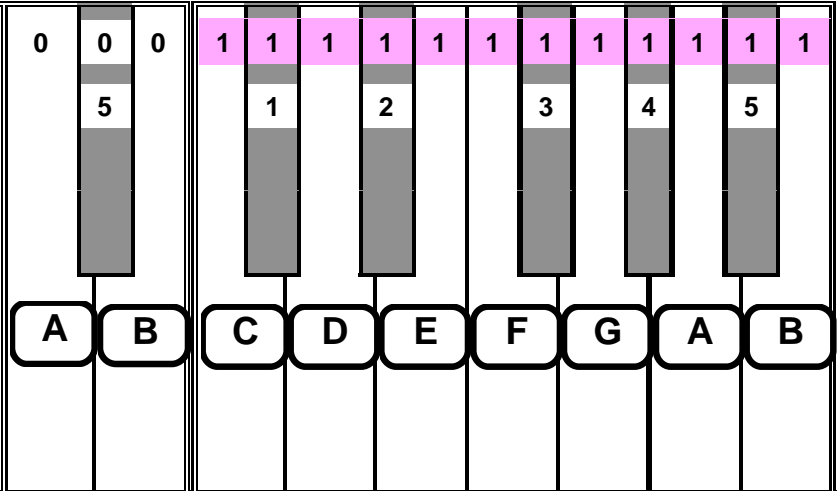
The 3  
Lowest  
Sounds

The Lowest Sounds - played  
with Left Hand

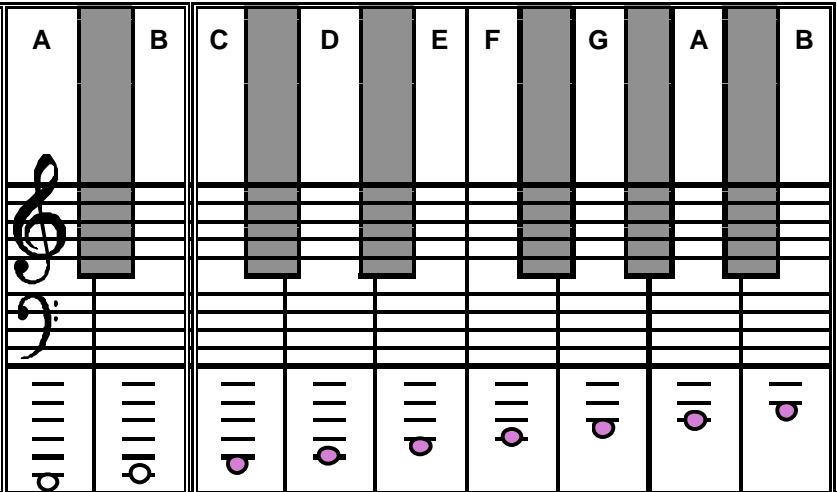
Key-Map Octave  
Groups With Names  
and Addresses of  
the Notes



Octave Groups:  
Keyboard Diagram  
With Names and  
Addresses of the  
Keys



White Key Names:  
Traditional Grand  
Staff -- a different  
note for each of 52  
white keys



Trim (cut) off right edge of page (shaded area) >>>>

***Page is Blank***

**The Very Low Sounds - almost always - LH**

**The Low Sounds - usually Left Hand**

**Indigo Octave Group**

C D E F G A B

**Blue Octave Group**

C D E F G A B

C D E F G A B

C D E F G A B

C D E F G A B

C D E F G A B

Trim (cut) off right edge of page (shaded area) >>>>

*Page is Blank*



The Middle Sounds - usually Right Hand

The High Sounds - usually Right Hand

**Green Octave Group**

1 2 3 4 5

C D E F G A B

**Yellow Octave Group**

1 2 3 4 5

C D E F G A B

**Home Base**

4 4 4 4 4 4 4 4 4 4 4 4

1 2 3 4 5

C D E F G A B

5 5 5 5 5 5 5 5 5 5 5 5

1 2 3 4 5

C D E F G A B

C D E F G A B

Middle-C

C D E F G A B

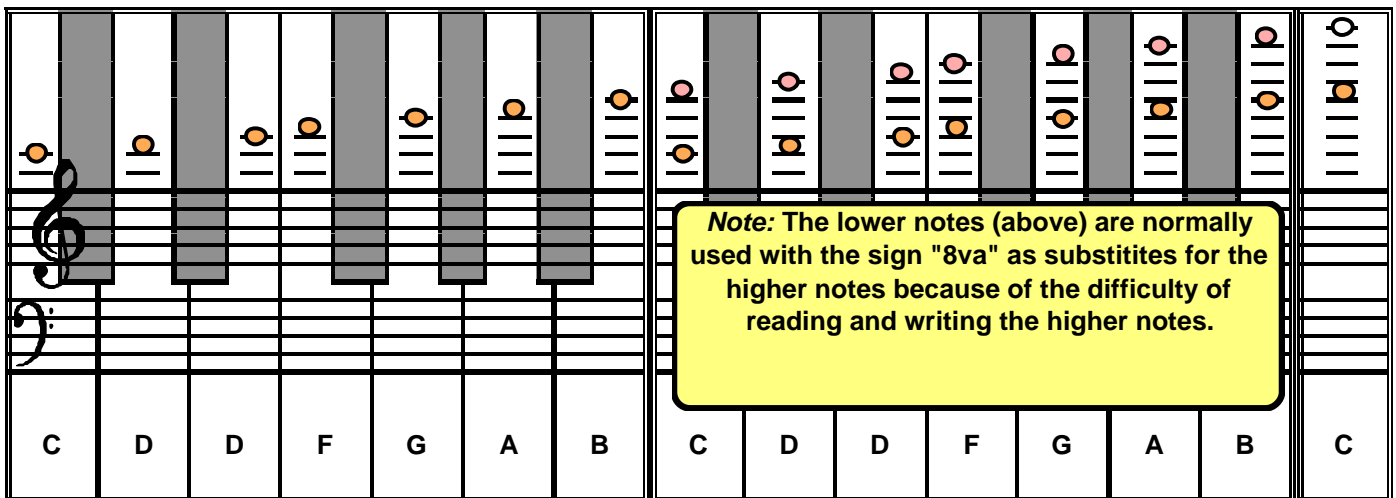
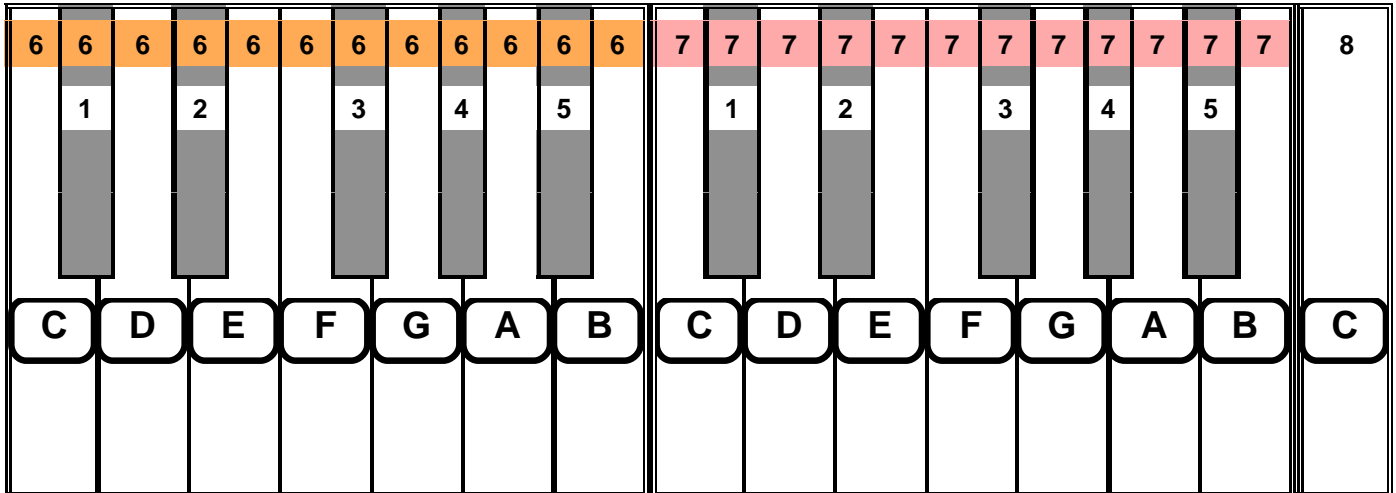
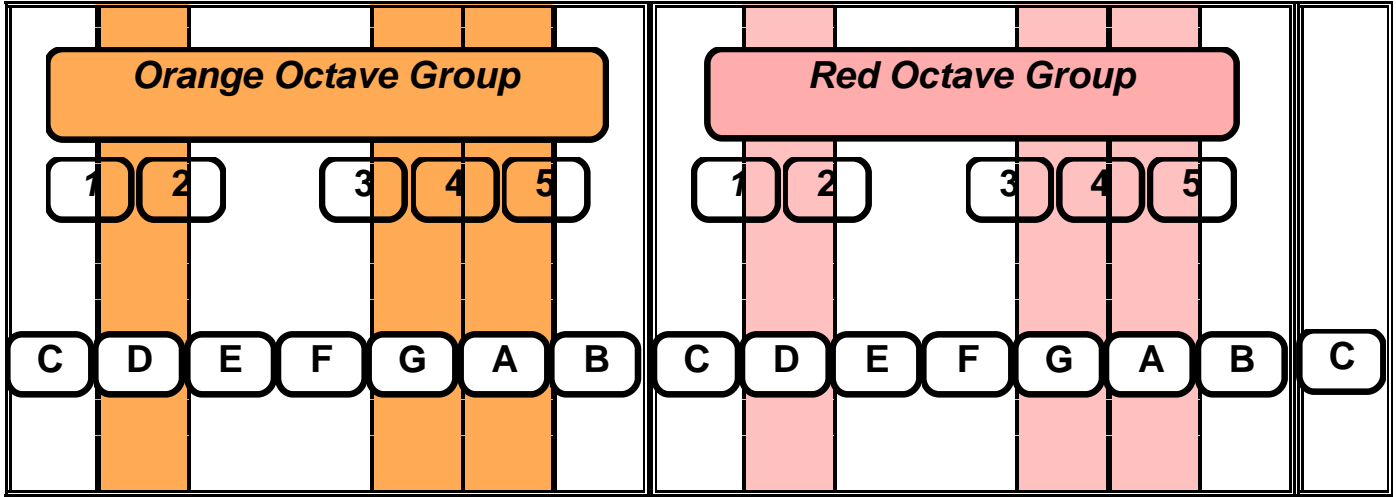
Trim (cut) off right edge of page (shaded area) >>>>

*Page is Blank*

**The Very High Sounds - almost always RH**

**The Highest Sounds - played with Right Hand**

**The Highest Sound**



*Page is Blank*